



OFFICIAL PROGRAMME

Specsavers



**ALL WEEKEND: RIVERSIDE MEADOW ~ NEWPORT PAGNELL
BAR * FUNFAIR * FOOD VENDORS * AND MORE...**

A WORD FROM THE CHAIR

CARNIVAL 2026 EDITION

The countdown is on!

Welcome to Carnival 2026!

2026 is back at Riverside Meadow, and we're excited to welcome everyone for another fantastic weekend of family fun.

This year's carnival promises two days packed with entertainment, including live music, delicious food vendors, a fully licensed bar, the funfair we all know and love, and two exciting main arena attractions. Be sure to catch the thrilling BMX stunt team and the brilliant sheepdog demonstrations.

The festivities begin with our 5K run through Newport Pagnell, followed by the annual carnival parade. Don't forget to bring some spare change for the bucket shakers, who work hard to raise money for many worthwhile causes.

We're delighted to welcome more than 50 local charities, community groups, and businesses to host stalls over the weekend - all raising funds and awareness for their causes. There will be plenty to see, do, and discover.

Saturday also sees the return of Apex Pro Wrestling, providing action-packed demonstrations and shows that are guaranteed to entertain children and adults alike.

On Sunday, favourite highlights return with the duck racing, the car rally, the NWAT dog show, and a car boot sale. With so much happening, there's truly something for everyone.

The carnival simply wouldn't be possible without the dedication of our volunteers. If you spot someone in a high-visibility vest managing a road junction, helping at a gate, or a committee member in a blue jacket rushing between activities, please take a moment to say hello - or even thank you. Their hard work makes the entire event possible.

We're always looking for new volunteers, and each year it becomes more important to recruit extra help. If you'd like to get involved and support this fantastic community event, we'd love to hear from you.

Have a wonderful carnival weekend - we can't wait to see you there. And if you'd like to support us in any way, please get in touch.

Thanks!



WWW.NEWPORTPAGNELLCARNIVAL.COM

A BIG THANK YOU TO

OUR SPONSORS



CARNIVAL PARTNER SPONSOR



MUSIC STAGE SPONSOR



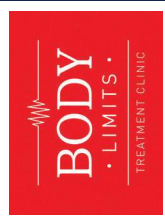
MAIN ARENA SPONSOR



DUCK RACE SPONSOR



5K RUN SPONSOR



WWW.NEWPORTPAGNELLCARNIVAL.COM

SATURDAY

4TH JULY



The first runners will leave Bleaklands at 12pm sharp, closely followed by the family fun run. The parade begins moments later.

Leaving Tanners Drive, the Parade turns right onto Brickhill Street and right again at the Redhouse Park roundabout, passing Lidl on the left and under the bridge of the M1 motorway. It takes the second exit at the Red House pub roundabout, continuing on Wolverton road all the way to Newport Pagnell High Street.

PARADE ROUTE



WWW.NEWPORTPAGNELLCARNIVAL.COM

PARADE ROUTE & CLOSURES

The Parade follows the High street to the mini roundabout in front of the Cannon pub. Here, it will take a right and pass over Iron Bridge, past the Aston Martin showroom, before turning right onto Severn Drive (by Harthen House), finally finishing at Riverside Meadow (via Dove Close).

Roads in and around Newport Pagnell will be closed and/or affected between 11.30am and 1.30pm. Roads will reopen once the parade has passed through. We strongly advise residents along the parade route to plan accordingly around those 2 hours.

SUNDAY

5TH JULY

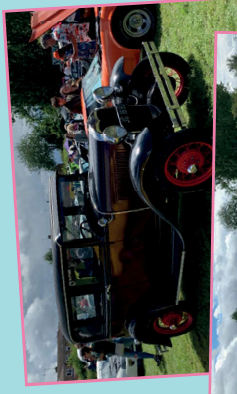
CAR RALLY & STATIC SHOW

There are no official road closures in place on Sunday but there will be a superb collection of unique and impressive motor vehicles to watch as they drive through the town.

Leaving Tanners Drive, the rally turns onto Brickhill Street and then takes a right at the Redhouse Park roundabout and on to Wolverton Road. It continues on to the High Street, before turning right at the mini roundabout (outside the Cannon pub) and continuing along St. Johns Street.

Over the Iron Bridge, past the Aston Martin showroom before turning right onto Severn Drive. Finally finishing at Riverside Meadow (via Dove Close).

Please come out and give the rally a wave, some entrants have traveled many miles to be with us at Carnival. Many of the cars will be on Riverside Meadow after the rally if you'd like a closer look or to chat to the owners.



RALLY ROUTE

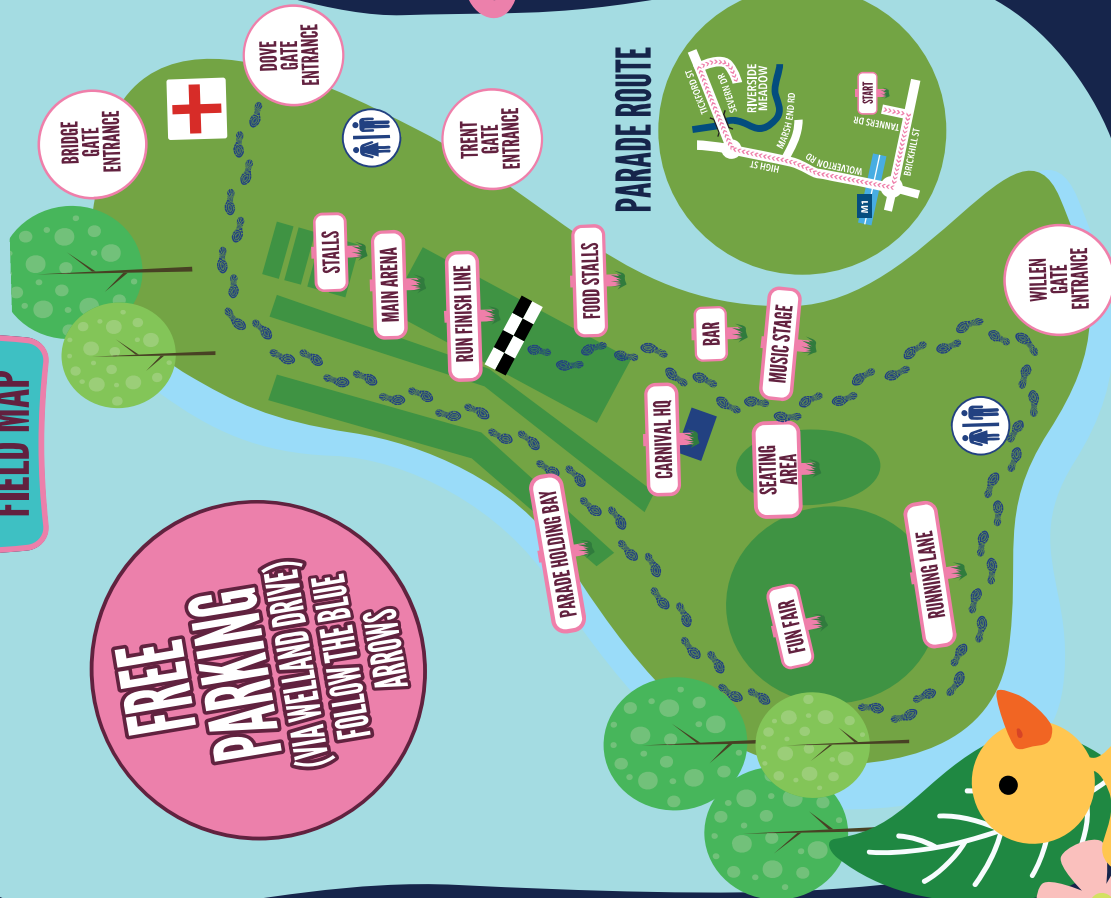


WWW.NEWPORTPAGNELLCARNIVAL.COM

SATURDAY

FIELD MAP

FREE PARKING
(VIA WELAND DRIVE)
FOLLOW THE BLUE ARROWS



PARADE ROUTE

IMPORTANT STUFF...

PARKING

If you are traveling from afar, free parking is available on the field, accessed via Welland Drive – MK16 9DX or What3Words ///shack,pointed,fabricate



PLEASE DO NOT PARK IN THE RESIDENTIAL STREETS, THERE IS PLENTY OF ROOM FOR ALL VISITOR VEHICLES ON THE MEADOW



We are the first to admit that the parking isn't the easiest to find, but we have added lots of signage to help, so please keep your eyes peeled for the BLUE arrows.



PLEASE ADHERE TO A STRICT 5MPH SPEED LIMIT UPON ENTERING THE MEADOW

THE

FOOD VENDORS

Once again, we have some of the tastiest food vendors in the area, bringing you a selection of tantalising treats from around the world.

MENU BOARD

Fully Licensed Bar

We Will Wok You

Gut Buster Food Bar

Really Awesome Coffee

Willies Garden Kitchen

Soft Whip Ice Cream Van

Traditional Burger Van

Mega Milkshakes

Chips N Dips

Pizzaroo

A1 Donuts

Specialist Sausage



SHOW TIME

MAIN ARENA

DAVID SEAMARK'S SHEEP DOG SHOW

David is a sheep and arable farmer running a flock of 600 breeding ewes. His display is with sheep or geese and up to five dogs. Live commentary is given by his wife Barbara.

The demonstration portrays the skill and commitment of a working sheepdog doing its daily work and shows the different characters and abilities of the dogs. David presents two entertaining shows: inviting children into the arena to assist with the performance.



THE BMX SHOW

Only the very best BMX riders will be performing in the main arena show (including Reelbut athletes). To guarantee a front row seat and witness impressive tricks, only usually seen on TV, make sure to head onto Riverside Meadow after the parade.



ARENA SCHEDULE*

Saturday 4th July

13:45

David Seamark

Sheepdog Demonstration

14:15

MBE: Stunt BMX Show

14:45

My Burlesque

15:00

Parade trophy winners

15:15

Unity All Stars

15:30

David Seamark

Sheepdog Demonstration

16:00

MBE: Stunt BMX Show

*Times subject to change

MUSIC STAGE SPONSORED BY:  BTG Eddisons

THE SUNSET LOUNGE PRESENTS: CARNIVAL STAGE

17:00 HEADLINE LILLIBET
4TH JULY 2026



SATURDAY

13:30 THE LEE'S

14:00 CHARLIE'S UNIFORM

15:00 ROSS CONNOR

16:00 FOREST OF FOOLS

SUNDAY

Open Mic all day so please come down and join in the fun.



SUNSET LOUNGE

OPEN MIC - LIVE MUSIC

NEWPORT PAGNELL CARNIVAL

5K RUN

Sponsored by



The carnival 5k is fast becoming a fan favourite and it's getting bigger every year! Known for its flat and fast route, it's the perfect chance for runners and walkers alike to try for a personal best. The run finishes on the carnival meadow in the show arena where a day of entertainment and fun awaits you.

The runs start from Blakelands Business Park (off Tanners Drive), it continues through the historic town of Newport Pagnell in front of crowds lining the street. To finish, the run enters onto the Carnival Meadow, with a final lap of the main arena to cross the finish line.

THE 5K (The 'Serious' One)

Open to those aged 11 and above, following UKA rules. No buggies, dogs or headphones are allowed. This is the ideal option for those looking to commit themselves to a serious 5k challenge and potential PB.

The 'Serious' One will start promptly at 12pm. Limited spaces will be available on the day and so we advise that you register in advance to make sure you get a spot and secure your limited edition 2026 medal.

THE FAMILY 5K (The Family One)

Open to everyone to run, jog, walk, buggy push and enjoy! This is a fun way to take part in the Carnival 5k with your family and friends.

The family fun run will head off shortly after the Serious 5k run and will follow an identical route. Children under 11 years old must be accompanied by an adult.

LOCATION START - FINISH

You'll start your run in Blakelands Business Park (off Tanners Drive). You'll finish the course by following the path around the Carnival Meadow and into the main arena to cross the finish line.

The What3Words location for the start of the run is: [///clearics.conjured.twin](https://www.what3words.com/#!/clearics.conjured.twin)

*Note there is NO parking via Tanners Drive. Runners wanting to park near the start should aim for Tongwell Lake and surrounding areas.

The What3Words location for the finish of the run is: [///hooklet.severe.chips](https://www.what3words.com/#!/hooklet.severe.chips)

What's Included?

(Both Runs)

Awesome limited edition 2026 metal medal

Chip timing

Optional limited edition T-shirt

Entry to Riverside Meadow

Official race photographer



NEWPORT PAGNELL CARNIVAL FUN DOG SHOW SUNDAY

5TH JULY
RIVERSIDE MEADOW



ENTRY PER
CLASS IS
£2



PRIZES FOR 1ST, 2ND AND 3RD PLACE WINNERS

NAWT Bedfordshire (formerly HULA Animal Rescue), has been helping animals and their owners since the 70's. With various animals on their site including cats, small animals, dogs and pigs, it's a busy centre that helps the community of Bedford, Milton Keynes and surrounding villages.

The annual Dog show at Carnival is a fun way for the team at NAWT to raise their profile in the local community as well as raising much needed funds to continue the amazing work that they do.

All entries to the dog show are welcome.

Please do keep in mind that the dog show is part of a larger event so there will be loud music, crowds and lots going on. Please ensure that your dog is comfortable in this type of environment. We also ask that you bring your poop bags, and use them as needed.

We will have water bowls on site on Sunday but cannot guarantee how many or how full they will be throughout the day, so you may want to bring your own as well.

To find out more about NAWT HULA and the work they do, please visit www.nawt.org.uk

REGISTRATION
OPENS FROM
11:30 AM



NEWPORTPAGNELL.CARNIVAL.COM #FNPCARNIVAL



NAWT Bedfordshire DOG SHOW

All classes are £2 EACH
Please complete one form per dog

DOGS NAME:

NUMBER OF CLASSES ENTERED:

	12.30	Red	Best Cross Breed
	12.45	Pale blue	Best Puppy (under 12 months)
	1.00	Green	Handsome Hound
	1.15	Yellow	Finest Golden Oldie (Dogs 7 years and over)
	1.30	Purple	Prettiest Female Pooch
	1.45	Orange	Best Rescue
	2.00	Dark blue	Judge's choice
X	2.15		BEST IN SHOW

Raising Money for NAWT Bedfordshire
Registered Charity no: 1090499

CARNIVAL SUNDAY FUNDAY CAR BOOT

FREE ENTRY

CAR BOOT SALE

On Carnival Sunday, 5th July from 12 noon we will be holding our annual car boot sale.

If you're looking for a bargain then pop down and have a browse. Whilst there, why not take in all the fun of the fairground and enjoy everything that Carnival Sunday has to offer: stalls, dog show, live music, car show, duck race, plenty of food options, drink and lots more!

Visitor entry onto the field is FREE all day, so please come down, bring your friends and family too.

Please note the gates are opened at 10am, please do not arrive any earlier.
Entry to sellers will not be permitted after 11am.

Car booters, if you would like a pitch on Carnival Sunday, please turn up on the day between 10am -11am (via Dove Close). There is no need to pre-book, just turn up at the gate.

Once on the meadow your car will need to remain stationary until 4pm for the safety of our visitors.

Please note the gates are opened at 10am, please do not arrive any earlier.

Entry to sellers will not be permitted after 11am.



SUNDAY 5TH JULY

Sponsored by

Specsavers

THE BABY DUCK RACE

WE'RE QUACKERS ABOUT THE BABY DUCK RACE!

You can help to support the carnival by entering the annual baby duck race and be in with a chance of winning some cash, plus take home one of our super duper duck trophies!

We have 1000 baby rubber ducks in training, ready to race at 3.00pm on Carnival Sunday. The race is proudly sponsored by Specsavers and they will be on site over the weekend to talk about all things hearing, seeing and of course ducks!

Tickets for the baby duck race are £1 each and there is no limit to how many you can buy. The more you buy the more chance you have of being a winner!



PRIZES

1st place £100

2nd place £50

3rd place £30

4th place £20

Tickets can be purchased in advance from any Carnival Committee member, at one of the other town events or online via our website until Monday 29th June.

We will also have lots of tickets available from the Carnival information tent on both Carnival Saturday and Carnival Sunday.

SUNDAY 5TH JULY

THE BIG DUCK RACE

THE BIG DUCK RACE IS BACK WITH A BANG!

Our Corporate Duck Race, sponsored by Specsavers is back for 2026.

Due to popular demand, we will once again be running TWO big duck races. Both races will take place on Carnival Sunday at 3pm (just before the baby duck race).

Local businesses and organisations are invited to enter large rubber ducks and decorate them with their company logos and creative costumes. Every year the crowd cheer on their favourite entrants as they race down the river, all competing for the coveted 'Fastest Duck' and 'Best Dressed Duck' titles.

Competition for the title of 'Best Dressed Duck' is fierce with incredible entries being made year after year! We cannot wait to see this year's entrants and what they will be wearing!

We are always pleased to welcome new entries into our big duck race every year. So if you are a local business, group or charity that would like to get involved and decorate your very own duck, then get in touch via our website or social media.

Don't forget, you get to keep your duck after the race and any bragging rights too!



Sponsored by

Specsavers

VOLUNTEERING

Throughout the year, your Carnival Committee work exceptionally hard to provide Newport Pagnell with one of its most popular community events, but we couldn't do it without your help.

To run the Carnival weekend we rely on the support of over 100 fantastic volunteers who spare a few hours over the weekend to help steward the field, build marquees and fences plus not forgetting the super volunteer road marshals during the parade road closures. Unfortunately we find it increasingly harder each year to find people willing to offer to help with these tasks and we really do need manpower.

Carnival 2026 is excited to welcome back Newport Pagnell and Olney Lions, NP Christmas Lights and TS Whaddon Sea Cadets as fellow volunteers - they'll be across the site all weekend in various capacities! Newport Pagnell Churches together are making their volunteering debut with us on the gates and we can't wait to meet everyone and show them what carnival is about.

That being said, we always need more hands - please consider giving us an hour of your time. If you're one of the hundreds of people watching the parade from outside your house then perhaps you could consider popping on a hi-vis jacket and manning a road closure whilst you watch the parade from your street junction. All road marshals receive a full briefing and we only need you for an hour or so. Road Marshals must be over 17 but volunteers can be any age to help on the field. You can volunteer on your own or with friends/family. The more the merrier!

Volunteering not only looks great on your CV but you can meet some truly awesome people and have a great time. The feel good factor, knowing you are part of something special is off the charts!

Please consider helping us to keep our town carnival & parade going.

Either email us at volunteers@newportpagnellcarnival.com or send us a message via Facebook.

WE LOOK FORWARD TO HEARING FROM YOU!



PARADE WINNERS

2025

A big shout out to everyone that makes the Carnival Parade such a spectacular show. Not only do our beautiful parade entrants have an amazing day, raise money for some incredible causes, they also compete for Carnival Trophies. We can't wait to see the bar raised even higher this year.

For now, a look back at our winners of 2025...

PROMOTIONAL WINNERS

- 1st – Fitness MK
- 2nd – Harry's Rainbow
- 3rd – Brooklands Centre

WALKING WINNERS

- 1st – Harry's Rainbow
- 2nd – Newport Pagnell Youth
- 3rd – My Burlesque

MOST INVENTIVE TRANSPORT WINNERS

- 1st – Willen Hospice
- 2nd – Childrens A&E @ MKUH
- 3rd – Harry's Rainbow

CHILDREN'S ENTRY WINNERS

- 1st – Harry's Rainbow
- 2nd – Newport Pagnell Youth
- 3rd – Shepherdswell

DANCING / CHEERLEADING WINNERS

- 1st – My Burlesque
- 2nd – Fitness MK

BEST OVERALL INTERPRETATION WINNERS

- 1st – Camphill
- 2nd – Brooklands Centre
- 3rd – Newport Pagnell Christmas Lights



MEET YOUR

CARNIVAL COMMITTEE



Sam McBrearty
Chair



Olivia Brandon-Graham
Vice Chair/ Parade Co-ordinator



Sarah Brandon
Secretary / Duck Co-ordinator



Steve Miller
Treasurer



Clare McNeaney
Facilities/ Sponsorship Co-ordinator



Paul Hazell
Music Stage / Run Co-ordinator



Wendy Miller
Stalls Co-ordinator



Becca Miller
Stalls & Volunteers Co-ordinator



Kirsty Weatherspoon
Car Show Co-ordinator



Dave Cox
Food & Beverages / Field Co-ordinator



Kyle Abraham
Committee Member / Shadow Treasurer



Tim Hudson
Legislatures Co-ordinator



Robin Maclean
Duck Co-ordinator



Mark Cockram
Main Arena / Run Co-ordinator



Grace Brandon-Graham
Committee Member



Frances DeBoo
Committee Member



Jamie Lawrence
Committee Member

AND FINALLY ...

THE WHEELBARROW

It's no secret that the Carnival team regularly have wheelbarrow raffles. Jam packed full of amazing treats and yummy goodness, the barrows have become a staple at local town events and carnival weekend itself.

Not only is the wheelbarrow a brilliant prize, it has also become a key source of fundraising to keep carnival running!

We just wanted to say **THANK YOU** to every single person that has bought a wheelbarrow ticket over the years and please do keep getting involved. One day, we could be wheeling a whole host of scrumptious treats to your front door!

Look out for our latest wheelbarrow over carnival weekend, grab a ticket, the next winner could be you!



Specsavers

Specsavers proudly supports the Newport Pagnell Carnival 2026



Scan here
if you would like
to find out more

Newport Pagnell
80a High Street
Tel 01908 616 441

Your Local Dealership.



Milton Keynes ★★★★★

- ✔ All-New Kia Range
- ✔ Kia-Qualified Service Technicians
- ✔ Approved Used Kia
- ✔ Genuine Kia Parts & Accessories
- ✔ Motability Specialists
- ✔ Blue Light Card Discounts



Discover Kia on your doorstep.

Milton Keynes Kia

4 DENBIGH ROAD, BLETCHLEY, MK1 1DF

01908 822 819






FIND US.

Proud sponsors of *Newport Pagnell Carnival*

Kirkby Diamond, now part of  BTG Eddisons

Property experts with a unique blend of surveyors, agents, auctioneers and consultants.

-  550 + people
-  180 years in business
-  35 offices nationwide

Continuing to support communities across Milton Keynes.



Find out more at [eddisons.com](https://www.eddisons.com)



The next generation of business mobility.



FREE Paint Protection Pack*

- ✔ All-New Kia PBV Range
- ✔ Kia-Qualified Service Technicians
- ✔ Motability Specialists
- ✔ Genuine Kia Parts & Accessories

Milton Keynes Kia PBV

4 DENBIGH ROAD, BLETCHLEY, MK1 1DF

01908 021 216

*With all new PBV purchases until 30th September 2026



FIND US.

In the trades?

Turn booked jobs into five-star reviews with

fintrano

80p per job

30 minute setup

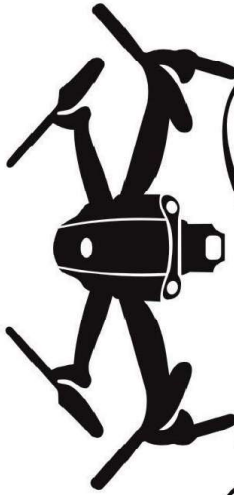
1 month free



SMITH | SKIPS

**NO.1 FOR SKIP HIRE
IN MILTON KEYNES**

WWW.DRONEOVERMK.COM



Chris Read

AERIAL PHOTOGRAPHY



@droneovermk



All you've gotta do is

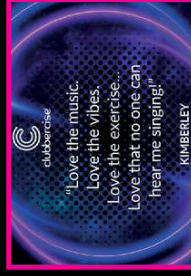
SHOW UP & GLOW UP

clubbercise

CARDIO • COMBAT • TONE • FITNESS

THURSDAYS 7.30PM

NEWPORT PAGNELL YOUTH CLUB



clubbercise
"Love the music.
Love the vibes.
Love the exercise.
Love that no one can
hear me singing!"
KIMBERLEY



Clubbercise with Kelly W

Cardio, toning, combat & plyometric moves, with
disco lights, banging tunes and **GLOW STICKS!**

Make friends, get fitter, get stronger and feel more confident!

BOOK YOUR SPACE AT - KELLYWHITAKER.SIMPLYBOOK.IT