

64

**NEWPORT  
PAGNELL**



CARNIVAL QUEEN

**CARNIVAL**

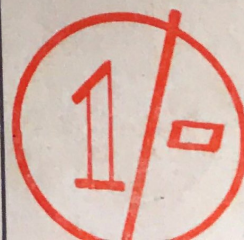


CARNIVAL QUEEN ATTENDANTS.

**FUN ~ GAIETY ~ THRILLS**

**Full Week's  
Entertainment  
For Young and Old  
August 22nd.-29th.**

No 239

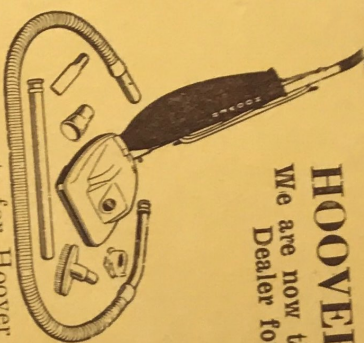




NEWPORT PAGNELL HISTORICAL SOCIETY

## HOOVER SERVICE

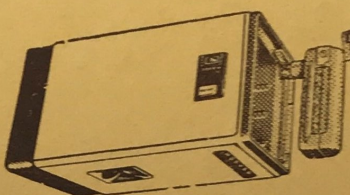
We are now the Hoover Service  
Dealer for the Area



All requests for Hoover Service  
or spares should be directed to us  
For quick and expert service on all  
Hoover Products call or phone

**A. T. STANLEY**

4 ST. JOHN STREET,  
NEWPORT PAGNELL  
Tel. 248



## Foreword

It seems strange that in this ancient town of ours the Carnival is a comparatively new innovation, yet thanks to its ever-energetic organisers, it is already woven into the fabrics of our traditions.

Long may it be so, especially now that it seems that the very shape and pattern of our community is about to change rapidly. Let us all strive, whatever changes may come, to maintain the ways and customs which have made Newport Pagnell a community rather than just a town.

The Carnival, year by year, will be one of the ways. Best wishes for its continuous success and renewed thanks to all those responsible.

A. A. CLAY, Chairman, Newport Pagnell U.D.C.

The Newport Pagnell Chamber of Trade was inaugurated in 1935. Since those early days the Chamber has met with periods of activity and success and periods of inactivity and little success, notably during the revival 1939-45, and the years of austerity following the Great War. The revival of activities commenced with the return to normal life and business after the war.

Apart from the more serious side of the Chamber's work, social activities were cultivated by sub-committees sponsored by the Chamber of Trade to organise the Carnival Week and Christmas Illuminations. These annual events are now accepted as an established part of our town life. The Chamber is indebted to the members of these sub-committees for the hard work and time spent in organising the events.

I wish to thank all those who in any way contribute towards making the effort a success, and finally I take the opportunity to thank the general public for the support and interest they have shown in the past; the organisers look forward again to enthusiastic public support for both events this year.

W. S. HAWKINS,

Chairman of the Newport Pagnell Chamber of Trade.

## GAMBELL & SKINNER

(S. J. D. SKINNER, F.R.I.C.S., F.A.I.)

Chartered Surveyors, Chartered Auctioneers, Estate Agents,  
Valuers and Land Agents

87 High Street  
Newport Pagnell  
Telephone: 13 (2 lines)

and at  
Olney

Weekly Livestock Market at OLNEY on Mondays  
Periodic Sale of Furniture at Olney on Thursdays

Agents for all Leading Insurance Offices



## NEWPORT PAGNELL CARNIVAL WEEK COMMITTEE

Chairman: R. J. Albone

Organising Secretary: W. McGrane

Hon. Secretaries: Miss P. Bellamy, Mrs. P. Lett

Hon. Treasurer: P. Payne

Committee: W. Finlow, T. Sapwell, P. Gardner

Carnival Queen arrangements: Mrs. R. Lown

Hon. Medical Officer: Dr. G. Cockings

Cover Design: R. F. Lown

### ACKNOWLEDGEMENTS

The Carnival Committee wish to thank everyone who is connected with the events during Carnival Week. All those who have given of their time and interest in helping to compile the week's events, the individuals, the firms and the organisations.

The programme is interesting and varied with many new ideas. As most of these events will be staged in the open we are hoping for a good week of weather. We hope you will support as many events as possible and that you have an enjoyable week.

A special thank-you to all those who will be acting as gate stewards and marshalls during the week.

R. J. ALBONE,  
Chairman of Carnival Committee.

**For**  
**Cosmetics**  
**Perfumes**  
**Home Permanent Waves**

**F. T. TAYLOR**

(PHARMACY NEWPORT PAGNELL) LIMITED

**36 HIGH STREET**

**NEWPORT PAGNELL**

**Phone: NEWPORT PAGNELL**

# BRADLEYS

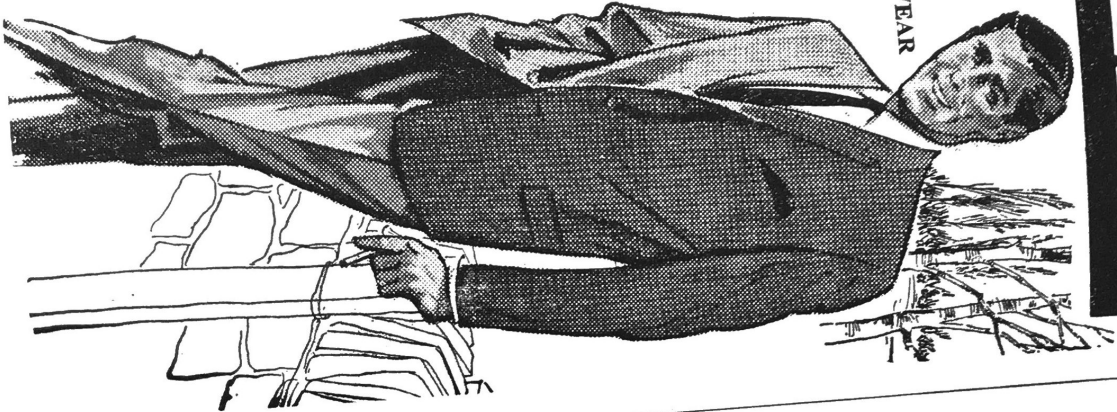
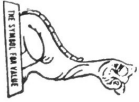
*have a flair*

FOR TOWN AND COUNTRY WEAR

ready-to-wear  
or made-to-measure  
lounge suits  
sports jackets  
hacking jackets  
jodhpurs  
breeches  
sports trousers  
wide selection of shirts,  
ties and knitwear  
raincoats  
duffle coats

**BRADLEYS**

— never satisfied  
till you are



40/42 HIGH STREET,  
NEWPORT PAGNELL

## THE WEEK'S EVENTS

**Saturday, 22nd.**

Crowning of the Carnival Queen.  
Children's Fancy Dress.  
Donkey Derby.  
Swimming Display. Fun Fair. Balloon Race.

**Sunday, 23rd.**

Roosters Motor Cycle Scramble.  
Open Air Service.  
Band Concert.

**Monday, 24th.**

"Pop" Concert.  
Bowls Match.

**Tuesday, 25th.**

Wrestling Tournament.  
Brooklands Club Concert.

**Wednesday, 26th.**

Jazz Festival.

**Thursday, 27th.**

Olde Tyne Music Hall.  
Chess Club Open Night.

**Friday, 28th.**

Newport Pagnell Tattoo.

**Saturday, 29th.**

Grand Parade of Floats.  
Tug-of-War Competition.  
Carnival Dance. Sideshows.  
Pick-a-Straw.

---

---

---

DON'T FORGET TO LOOK OUT FOR  
"MR. CARNIVAL"



**SATURDAY, AUGUST 22nd**

(Admission by this programme)

# CROWNING of the CARNIVAL QUEEN

By Miss VALERIE PITTS

Bury Field, 2 p.m.



MISS PITTS, the B.B.C. T.V. announcer studied at R.A.D.A. — spent four months in four months in Rep at Reading then understudied in two West End productions. She was then offered a chance to interview on a programme called 'People and Places' for Granada T.V. and has been on television ever since. She has interviewed for Granada, Anglia and Rediffusion. For 18 months she was interviewer and announcer with Tyne Tees T.V., which she left in 1960 to marry James Sargent, an executive with a London Brick Company, joined the B.B.C. shortly after this as an announcer. In addition she has a weekly theatre spot in 'Town and Around' and is Guest Comper with B.B.C.'s programme from Southampton — 'South Today.'

To be followed by

## CHILDREN'S FANCY DRESS COMPETITION

CLASSES : 3—6 years. 7—12 years.

Decorated bicycles, tricycles, prams.

Organised by NEWPORT PAGNELL WOMEN'S INSTITUTE

**LIFE**

Telephone: NEWPORT PAGNELL 256

**FIRE**

## THE S.I.C. PROPERTY AGENCY LTD.

INSURANCE BROKERS

105 HIGH STREET, NEWPORT PAGNELL

**ACCIDENT**

**MOTOR**

Established 1770

## R. Hayler & Sons

(A. J. & M. A. Hardy, Ltd.)

NORTH BUCKS SUPPLY STORES  
Newport Pagnell Woburn Sands

Family Grocers

Wine and Spirit Merchants

Diabetic Lager

Whitbread's Ales and Stouts

Bass — Worthington — Guinness — Cyder  
Tennents — Holsten — Carlsberg and Tuborg Lagers

Frozen Foods

Telephone Newport Pagnell 93



Saturday, August 22nd—cont.

# DONKEY DERBY

With the famous Whitley Donkey Racing Team

BURY FIELD, 3 p.m.

The famous Whitley Donkey Racing Team, with enthusiastic young local jockeys, will provide the thrills (but not too many spills we hope) on Saturday afternoon.

Six local firms have generously provided prize money for the six races, and thirty-six traders have sponsored a donkey at 30/- a head.

Highlight of the racing is the Sulky Trap Race between the two competitors of Carnival Week Mr. Basil Searle of The Green Man, Lavendon, and Mr. Terry Sapwell. An Open Ladies Sulky Trap Race will also be run.

To add to the fun the Newport Pagnell Rotary Club are organising a Tote so that spectators can back the donkey of their choice. The Carnival Committee are assured that all the donkeys can win but it is up to the jockeys and spectators to encourage their donkey with as much noise as possible.

Paddock Steward: Mrs. P. Reynolds.

Starters: Mr. and Mrs. R. H. Roberts.

Clerk of Course: Mr. L. G. Payne.

Judges: Mr. C. C. Breehener, Mr. C. R. Leetham.

Display of

## SYNCHRONISED SWIMMING

by SEYMOUR SWIMMING SCHOOL

TOWN SWIMMING POOL

8 p.m.

Saturday, August 22nd—cont.

# DONKEY DERBY RACE CARD

FIRST RACE 3 p.m. 250 yards.

T. and F. J. TAYLOR HANDICAP

(£5 prize money donated by T. and F. J. Taylor Ltd.)

No.	Entry.	Breeding.	Owner	Colour.
1.	JUSWACHT	By Dutch Courage out of Bottle	Newport Arms	Red
2.	CHAMPAGNE	By Pop out of Bottle	The Cannon	White
3.	CROOKED ELBOW	By Pints out of Pots	The Green Man	Black
4.	DRY NIGHT	By Clean out of Beer	The Plough	Blue
5.	HANGOVER	By Morning out of Night	The Kings Arms	Green
6.	PARDON	By Carbonate out of Soda	The Dolphin	Yellow

SECOND RACE 3.25 p.m. 200 yards.

## CONSTRUCTION CANTER

(£5 prize money donated by Aston Martin Lagonda Ltd.)

No.	Entry.	Breeding.	Owner.	Colour.
1.	PRECAST	By Cement out of Mixer	Henry Mason junr.	Red
2.	PLUMBBOB	By Corner out of True	H. W. Mason & Sons	White
3.	DABBER	By Paint out of Tin	Willford Bros.	Black
4.	CARRYING	By Chisel out of Wood	R. Prickett	Blue
5.	LEAK	By Washer out of Tap	M. Adams	Green
6.	HOLE	By Lathe out of Plaster	C. Vaughan	Yellow

SULKY TRAP RACE 3.35 p.m.

Between Mr. Basil Searle and Mr. Terry Sapwell.

THIRD RACE 3.50 p.m.

## THE LIGHTNING STAKES

(£5 prize money donated by Mr. G. W. Griffin)

No.	Entry.	Breeding.	Owner.	Colour.
1.	SPARKS	By Wire out of Fusebox	A. T. Stanley	Red
2.	PEACE	By Jukebox out of Order	Friths	White
3.	SURPRISE	By Bolt out of Blue	Ritchie & Watts	Black
4.	SHOCK	By Plug out of Socket	Co-operative Socy.	Blue
5.	INSULATION	By Wire out of Earth	Francis Coates	Green
6.	COLD COMFORT	By Heater out of Paraffin	Maintenance Div., J. W. & E. Sowman Ltd.	Yellow

(cont. overleaf)



# Saturday, August 22nd—cont.

## DONKEY DERBY RACE CARD (cont.)

FOURTH RACE 4.15 p.m.

### NEWPORT PAGNELL TOWN PLATE

(£5 prize money)

No.	Entry.	Breeding.	Owner.	Colour.
1.	SECOND VEG.	By Peas out of Pod	R. J. Albone	Red
2.	COLD CUT	By Joint out of Fridge	Sibleys	White
3.	CIDER	By Apple out of Press	Haylars	Black
4.	WALKING	By Right out of Petrol	D. Mynard	Blue
5.	B.M.K.	By Moth out of Carpet	Stuarts Furnishers	Green
6.	DRINKA PINTA	By Straw out of Bottle	Palmer's Dairies	Yellow

### OPEN LADIES SULKY TRAP RACE

FIFTH RACE 4.40 p.m.

### PAPER CHASE

(£5 prize money donated by Sogenique (Service) Ltd.)

No.	Entry.	Breeding.	Owner.	Colour.
1.	MISREPRESENTATION	By Quote out of Context	The Bucks Standard	Red
2.	COUPON CHECK	By Results out of Green	Chronicle & Echo	White
3.	DISPATCH	By Run out of Print	Wolverton Express	Black
4.	DELIVERY	By Boys out of School	Mapleys	Blue
5.	ERRATUM	By Journeyman out of Condition	Loyal Press	Green
6.	COUNTLESS	By Times out of Number	A. Lewis & Co.	Yellow

SIXTH RACE 5.5 p.m.

### SABRE HIGHLIGHT HURDLE

(Sweater donated by Sabre Sweaters)

No.	Entry.	Breeding.	Owner.	Colour.
1.	JUMPER	By Coats out of Sheep	Woolcraft	Red
2.	NAPKIN	By Linen out of Ireland	W. T. Smith	White
3.	NAKED U	By Sheep out of Fleece	E. Cook & Sons	Black
4.	RUN FAST	By Wheel out of Balance	W. S. Hawkins	Blue
5.	MOSSBROS	By Hire out of Suit	Allens of Olney	Green
6.	SUIT	By Cut out of Cloth	A. Tandy	Yellow

## WANTED: "MR. CARNIVAL"

The following description supplied to us by Insp. K. Kingston and the local Police of the man calling himself "Mr. Carnival".

Vital statistics : 45-47-45.  
 Height : 5ft. 8in.  
 Face : Round—not his fortune.  
 Complexion : Ruddy.  
 Hair : Greying, what there is of it. Hair on face : None during working hours.  
 Head : On shoulders.  
 Forehead : Receding.  
 Eyebrows : Normal, black upraised.  
 Eyes : Hazel.  
 Nose : Snub.  
 Mouth : Frequently open.  
 Lips : Below nose.  
 Teeth : During daytime only.  
 Chin : Two.  
 Ears : Either side of head.  
 Hands : Often upraised.  
 Voice : Quiet spoken, no accent.  
 Marks : Won't tell his best friend.  
 Unusual features : Always smokes same brand of cigarettes.  
 Dress : Wears raincoat unbuttoned, wears the chain.  
 Occupation : Fond of watching others work.  
 Places frequented : High Street, Newport Pagnell.

If you think you know this man, go up to him and challenge him saying: "YOU ARE MR. CARNIVAL", at the same time showing him your Carnival Programme. The first ten persons correctly challenging Mr. Carnival will each receive a prize.

For your DRAPERY

visit

W. T. SMITH

41 HIGH STREET, NEWPORT PAGNELL



During the Week conducted Tours of  
ASTON MARTIN LAGONDA'S WORKS  
will be arranged.

Admission will be by ticket only,  
available from Advance Booking  
Office.

*Children under 14 not admitted unless accompanied  
by an adult.*

## “WOOLCRAFT”

(SYLVIA E. FRANCIS)

WOOL SPECIALIST

*All the best makes in stock*

BABY WEAR

*Everything for the New Arrival and dainty garments up to 2 years*

Harrington's "LADYBIRD" Stockist

**63 HIGH STREET, NEWPORT PAGNELL, BUCKS**

Phone: NEWPORT PAGNELL 6

SUNDAY, AUGUST 23rd

## ROOSTERS MOTOR CYCLE SCRAMBLE

BURY FIELD 2 p.m.

The meeting will consist of three events with heats and finals

Admission by this Programme. Car Park 2/-. Motor Cycles 1/-.

## COMBINED OPEN AIR SERVICE

7.15 p.m. Ousebank

Arranged by the Revd. J. CRISP  
followed by

## BAND CONCERT

by NEWPORT PAGNELL TOWN BAND, OUSEBANK

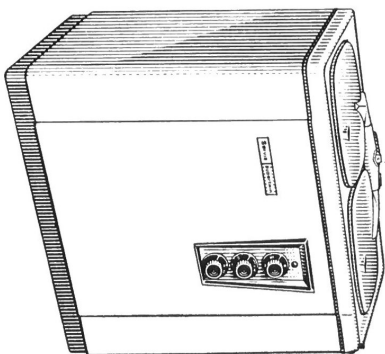
(If wet in Parish Church)

### PROGRAMME:

March: "The Victors Return"	W. Rimmer
Selection: "H.M.S. Pinafore"	Arthur Sullivan
Valse: "Thoughts"	Kenneth J. Alford
Samba: "The Hawaiian Samba"	Edrich Siebert
Gverture: "Light Cavalry"	F. von Suppe, arr. by Greenwood
Patrol: "The American Patrol"	F. W. Meacham, arr. by Edrich Siebert
Suite: "A Holiday Suite"	Eric Ball
Entract: "Whistling Rufus"	Kerry Mills
Spanish March: "Zanora"	Frank Seymour, arr. Edrich Siebert
March: "The Tiger's Tail"	T. W. Thurban
Entract: "Alexander's Ragtime Band"	Irving Berlin
Sacred: "All in the April Evening"	Hugh S. Robertson
March: "Punchinello"	W. Rimmer
"QUEEN"	

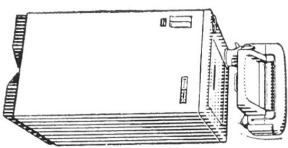


**SERVIS** invite you to inspect the full range of washing machines at the Newport Pagnell Co-operative Society's Furniture Exhibition at Church House.



The Servis Supertwin For faster washing with timed washing, heater that boils and twin motors, you can wash, heat and spin at the same time. Clothes are spray-and-soak rinsed for extra cleanliness. And the smooth-sided spinner drum is kind to delicate fabrics. Twin pumps give faster emptying. **Hi-zone too!** Like all Servis machines, the Supertwin has Hi-zone, the world's finest wash action. Built tall and wide, the Servis Hi-zone agitator makes *all* the water work, gets *all* your clothes clean

## SERVIS COMPACT



The Servis Compact Fits neatly into any small space yet washes a full 6 lb. load and power-wrings a double blanket with ease. The Compact *boils*—even while it washes. Power-wringer with reversible rollers stows away in the cabinet after use. **Hi-zone too!** Built tall and wide, the Servis Hi-zone agitator makes *all* the water work, gets *all* your clothes clean.

Your blankets washed and dried free, during continuous demonstration.

## MONDAY, AUGUST 24th “POP” CONCERT

LOVAT BANK, 8 p.m.

Doors open 7.15 p.m.

featuring

**LULU and THE LUVVERS**

**THE CRESTERS : THE TOURTRACKS**

Comper : TERRY SAMPWELL

LULU is a dynamic 16-year-old girl who crashed into the Top Ten and became a household name overnight. She is very ably supported by those forgetful backing boys “THE LUVVERS.” It is some time since so many girls dominated the charts and this makes Lulu's record of “Shout” even more outstanding.

“THE CRESTERS” are well known in the area having played at Newport Pagnell 18 months ago, and are considered to be one of the top musical groups in the country. They have made four records, their latest being “Put your arms around me” and “Do it with me.” They have recently appeared at Blackpool with Sammy Davies Junior.

**ADMISSION :** Reserved 10/-, 7/6d. Unreserved 5/-, 3/6d.

Tickets obtainable in advance.

## NEWPORT PAGNELL BOWLS CLUB BOWLS MATCH

Commencing 6-30 p.m.

Urban City Fathers v. Bowls Club

All Welcome — Free Admission



# W. FLEET LTD.

*Established 60 years*

## FAMILY BUTCHERS

FOR BEST QUALITY

LOCAL FED BEEF, PORK AND LAMB

Pork Sausages, Pork Pies, Pressed Beef and Brawn  
English and Danish Bacon, a good selection of Frozen Foods

*Our Speciality*

FAMILIES WAITED UPON DAILY

*Free Delivery in Local Villages twice weekly*

61 HIGH STREET, NEWPORT PAGNELL

Phone 59

## Your Petrol and Service Station

For Prompt and Courteous Attention

The

North Bucks Motor Co.

NEWPORT PAGNELL

Bucks

Phone: Newport Pagnell 57

Prop: N. E. Hollis

Any make of car supplied

TUESDAY, AUGUST 25th

## PROFESSIONAL WRESTLING TOURNAMENT

(presented by DALE MARTIN PROMOTIONS)

LOVAT BANK, 8 p.m.

Doors open 7.15 p.m.

featuring

JOHNNY KWANGO (of West Africa)

versus JOHNNY CZESLAW (of Poland)  
(Mid heavyweight)

PETER SZAKACS versus DICK CONLAN  
(Welter weight)

ERIC SANDS versus BERNARD MURRAY  
(Catchweight)

PETER RANN versus MICK McMICHAEL  
(Middleweight)

ADMISSION: Reserved 10/-. 7/6d. Unreserved 5/-. 3/6d.

Tickets obtainable from advance booking office.

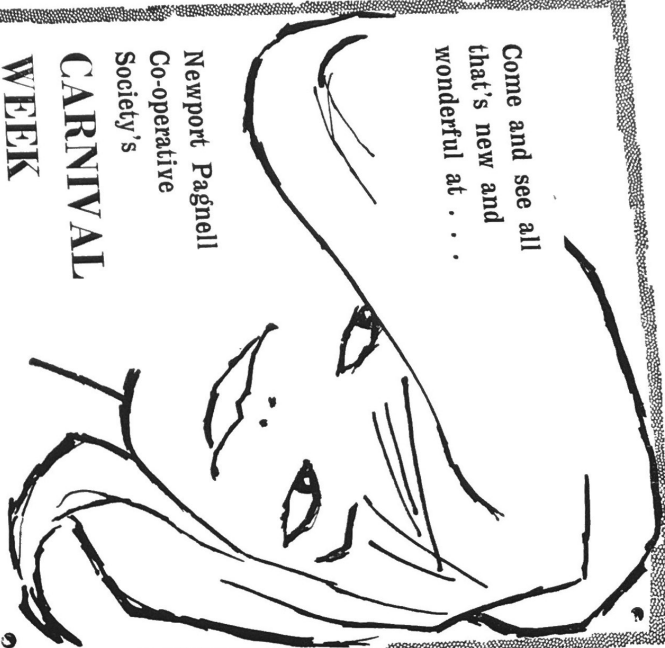
## BROOKLANDS CLUB CONCERT

at 7.30 p.m. in the CLUBROOM

(A repeat performance for Club Members will be given on Friday evening)

THE BROOKLANDS CLUB CHOIR, with their pianist, Doris Harris, have had a very busy year fulfilling many engagements over a very wide area, helping to cheer those less fortunate than themselves.

Come and see all  
that's new and  
wonderful at . . .



Newport Pagnell  
Co-operative  
Society's

**CARNIVAL  
WEEK**

## **FURNITURE EXHIBITION**

CHURCH HOUSE NEWPORT PAGNELL

**22nd - 29th AUGUST**

2.15 to 9 p.m. daily (except Sunday)

EVERYTHING TO MAKE THE HOME MORE  
BEAUTIFUL, including:-

FURNITURE Dining Room, Lounge, Bedroom,  
Kitchen, and Occasional Furniture

BEDDING Divans and Mattresses

CARPETS Axminster, Tufted and other quality  
floor coverings

RADIO Transistors, Record Players, Radiograms

TELEVISION For rental or purchase

Continuous Demonstrations of Washing Machines,  
Sewing Machines, Gas Cookers, and other home  
appliances.

**DON'T MISS THIS GREAT EVENT !**

**IN THE £ DISCOUNT**

on All Cash Sales during the Exhibition

NEWPORT  
PAGNELL  
**CO-OPERATIVE SOCIETY**

WEDNESDAY, AUGUST 26th

The Newport

# **JAZZ FESTIVAL**

at Lovat Bank at 8 p.m.

Tickets Six Shillings Each

presenting

TERRY LIGHTFOOT'S JAZZMEN

supported by

JACK LANTSBERY JAZZMEN

and

THE BEDFORD JAZZ CLUB

Mr. Basil Searle will act as Compere

A Barbeque will be open all evening



## HENRY MASON JUNR.

BUILDING CONTRACTORS  
PLUMBERS & DECORATORS

130 HIGH STREET, NEWPORT PAGNELL

TEL. 195

58 BUCKINGHAM ROAD BLETCHLEY

TEL. 2329

FOR TOP QUALITY  
GROCERIES and PROVISIONS  
AT LOW PRICES  
shop at

## Dudeny & Johnston Ltd.

NEWPORT PAGNELL

and receive your GREEN SHIELD STAMPS  
for wonderful free gifts

Self-Service with Personal Attention

THURSDAY, AUGUST 27th

## OLDE TYME MUSIC HALL

LOVAT BANK, 8 p.m.

Doors open 7.15 p.m.

A diversification of delights, presented by Terry Sapwell and The Pioneers, deliberately designed to titillate the tickle spots and promote prolonged cachinnation.

A superabundance of songs and sketches executed with the effervescence and exuberance, the flamboyant and flourish of that paramount period of English Music Hall—the Edwardian Era. In short Ladies and Gentlemen take your seats for "The Good Old Days".

ADMISSION : 2/- (1/- children and O.A.P.)

NEWPORT PAGNELL CHESS CLUB

will hold an

## OPEN NIGHT

at

BURY LAWN SCHOOL

Commencing at 7.30 p.m.

Members will welcome the public who may watch  
or play Chess as desired

FRIDAY, AUGUST 28th

DURING CARNIVAL WEEK

SHOP AT

**JAMES LINE**

where your prestige newspaper

**The Bucks Standard**

IS ON SALE

**NEWPORT PAGNELL TATTOO**

**LOVAT BANK, 7 p.m.**

Gates open 6.30 p.m.

*You will see . . .*

The celebrated **BEDFORD BOYS' CLUB GYM TEAM.**

A specially picked team of he-men who will endeavour to break the existing Naval record for the light naval gun event.

A display by the **BEDFORD ARCHERY CLUB.**

The **WELLINGBOROUGH REDWELL CARNIVAL BAND.**

Display by **ST. JOHN AMBULANCE BRIGADE.**

There will also be many other attractions.

**ADMISSION : 2/-.**

**1/- (O.A.P. and Children).**

**GIBSONS of**

**NEWPORT PAGNELL**

LADIES OUTFITTERS

**52-54 HIGH STREET**

*FOR GOODS OF QUALITY*

*You are cordially invited to inspect our stock at your leisure*



SATURDAY, AUGUST 29th.

## *Parade of Floats*

Floats Assemble Lathbury Park  
at 2.30 p.m.

Parade to Commence at 3 p.m.

Judging to take place in Bury Field at approx. 4 p.m.

### CLASS

1 Theme: Favourite T.V. Programme

CHAMBER OF TRADE CUP ... £5 - £2 - £1

2 OPEN CLASS Most Spectacular

Open to all floats participating in the parade.

CARNIVAL SHIELD ... .. £10

Donated by R. J. Albone.

3 TRADE SECTION

STRANGWAYS CUP ... .. £6 - £3 - £1

Donated by T. J. Strangways.

4 HORSE and RIDER

TANKARD ... .. £3

Donated by P. Gardner.

### ROUTE OF PROCESSION

High Street, Wolverton Road, Linford Lane, Foxgate,  
to Bury Field for Judging.

---

---

### TUG-OF-WAR COMPETITION FOR CARNIVAL TUG CUP

---

---

To take place during judging of Carnival Floats. Entries  
(teams of eight) to Mr. Reg. Wilford, Newport Pagnell Youth Club  
Leader.

**"It speaks for itself"**  
Good Food Reasonable prices

## **The Cosy Restaurant**

High Street, Newport Pagnell.

Tel.: 355

Luncheons — Grills — Snacks

Open 9 a.m. — 7 p.m.

Let us quote for your outdoor catering — Weddings  
Club Dinners — Buffet dance etc.

Recommended 1964 edition: Bonne Table et Tourisme

## **J. W. & E. SOWMAN LTD.**

LATE W. J. RAND

General and Builders' Ironmonger

Tool and Seed Merchant

44 HIGH STREET, NEWPORT PAGNELL  
Phone 136

## **JOHN E. CLARE & SONS**

Telephone 302 NEWPORT PAGNELL Established 1898

### ANTIQUE AND HOUSE FURNISHERS

Restorations and Repairs

China and Glass - Carpets and Lino's - Fitted Carpets

Lino Tiles - Curtains - Upholstery - Re-Covering

# A FIRST-CLASS HOBBY

and get paid for it!

Learn to drive - lorries and fork-lift trucks

Become a marksman with a rifle; a trained technical storeman.

Have an adventuresome, profitable past-time with good companions

... And get pay, bounties, expenses and cash allowances



**JOIN THE T.A.**

Find out more about the Territorial Army, without obligation, by calling in at

**1 STORES GOY., R.A.O.C. (T.A.)**

**LOVAT BANK, SILVER STREET, NEWPORT PAGNELL.**

Saturday, August 29th—cont.

## *Grand Carnival Dance*

FOR THE FAMILY

at LOVAT BANK, 8-11.45 p.m.

DON PEARCE ORCHESTRA

ROASTING A PIG :: COFFEE, ETC.

Licensed Bar Applied For

Tickets 5/-.

— Mr. Carnival will be revealed during the evening —

### PAINTING COMPETITION

(Organised by Newport Pagnell W.E.A.)

**FOUR CLASSES:** CHILDREN, up to and including 7 years, 8—11 years, 12—16 years. Choice of subject: The Fair or The Circus.

**ADULT CLASS,** any subject Prizes: 1st, £1. 2nd, 10/-.

Entries to be exhibited in the Congregational Church Schoolroom during Carnival Week.

### ADVANCE BOOKING OFFICE

36, HIGH STREET,  
NEWPORT PAGNELL

(formerly Willow's Fish Shop)

OPEN DAILY: MON. 17th to FRI. 21st—9 a.m.—7 p.m.



All grades of Milk

Fresh Cream a Speciality

## *Palmer's' Dairy*

Established 1914

High-Class Dairy Produce

106 HIGH ST., NEWPORT PAGNELL

Phone 631

## **H. F. Sibley & Sons**

Grocers

High-class Butchers

Greengrocers

*Cooked Meats a Speciality*

65/67 HIGH STREET, NEWPORT PAGNELL

Phone: NEWPORT PAGNELL 191

WORKMEN'S SOCIAL CLUB  
NEWPORT PAGNELL

The 67th Annual

FRUIT, FLOWER AND VEGETABLE

## **SHOW**

will be held on

**SATURDAY, SEPTEMBER 5th, 1964**

Show will be opened at 6 p.m.

Entries close Friday, September 4th.

# RENT

## THRIFTWAY

# 6<sup>D.</sup>

SLOT  
METER

# TELEVISION

FRITH RADIOCRAFT LTD.

28 HIGH STREET, NEWPORT PAGNELL



07/06/C

## **R. J. ALBONE**

FRUITERER

GREENGROCER

FLORIST

**43-45 High Street  
Newport Pagnell**

For Delivery Service Telephone 82

FLOWERS FOR ALL OCCASIONS  
YOUR INTERFLORA AGENT

## **W. S. HAWKINS**

**JEWELLERY - WATCHES - CLOCKS  
SILVERWEAR**



**31 High Street, Newport Pagnell**

Messrs. Coales & Sons, 1810-1931

W. S. Hawkins, 1931

Telephone 303

**28 Church Street, Wolverton**

Established 1898

W. S. Hawkins, 1923

Telephone 3277