

Nº 2369

NEWPORT
PAGNELL

Lucky Nº ?
PRIZE—Aeroplane trip
over Newport Pagnell

CARNIVAL WEEK

SATURDAY, AUGUST 26th, to
SATURDAY, SEPTEMBER 2nd,
1961

PROGRAMME
PRICE 6d.

Admission to a number of events is
free on production of programme

CARNIVAL WEEK SPONSORED BY
THE NEWPORT PAGNELL CHAMBER OF TRADE

A. T. STANLEY

Radio • Television • Electrical

Main Agents for all leading makes of

**Washing Machines, Refrigerators
and Cleaners**

including

HOOVER, HOTPOINT, PARALL, ELECTROLUX,
Etc.

Main Area Stockists of

PYE, FERGUSON, ULTRA, Etc.

RADIO and TELEVISION

Complete range of small Electrical
appliances always in stock

4 ST. JOHN STREET

NEWPORT PAGNELL

Telephone 243

Given to NPHS Jan 95

by Dennis Myrland 1995/2P

W. S. Hawkins

-: Jewellery -:

-: Watches -:

-: Clocks -:

-: Silverwear -:

-: Repairs -:

31 High Street, Newport Pagnell

Messrs. Coates & Sons 1810-1931

Telephone 303

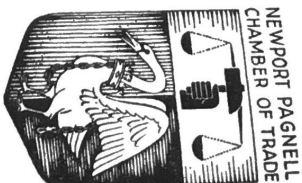
W. S. Hawkins 1931

28 Church Street, Wolverton

Established 1898

Telephone 3277

W. S. Hawkins 1923



Chamber of Trade

The Chamber of Trade was formed at the beginning of March, 1935, with Mr. W. S. Hawkins as President and Mr. A. Canning as Honorary Secretary.

A great deal of work was done under the various presidents and the Chamber remained an important factor in the commercial life of the town until the retirement of Mr. A. Canning in 1944. Thereafter changes took place and the influence of the Chamber tended to wane until in November, 1959 a meeting of members was called and it was agreed that the Chamber was essential to the well-being of the locality. New officers were elected with Mr. W. S. Hawkins as Chairman, Mr. W. J. Coombs as Honorary Secretary and Mr. R. J. Albone as Honorary Treasurer.

On the 11th January, 1960, the Newport Pagnell Co-operative Society suggested that a Christmas lighting scheme should be considered in the town, the Chamber readily co-operated and in due course a sub-committee of members were busy organising a display, the result of which fulfilled the hopes of the sub-committee and its sponsors to the extent that it was agreed the experiment is worthy of repetition.

In the spring of this year, certain members led by Mr. Albone, proposed a Carnival Week, to be sponsored by the Chamber and held during the summer, on Monday, May 1st, 1961, a public meeting was called at Ousebank and a summer Carnival Committee formed of those representatives of the various organisations in the town prepared to take part, the result is set out in the following pages.

W. J. RAND

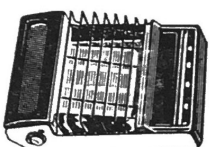
General & Builders' Ironmonger

Tool & Seed Merchant

44 HIGH STREET, NEWPORT PAGNELL

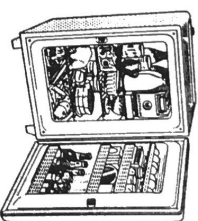
Phone 136

For Personal Service



EAST MIDLANDS

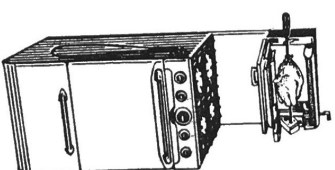
GAS IS QUICK



CLEAN AND

ALWAYS ON TAP

*—make the
most of it!*



Gas is the modern way to heat rooms, cook meals, wash clothes, heat water, and keep food fresh. Gas does every job quickly, cleanly and cheaply. See the latest easy-to-clean, cheap-to-run gas appliances at your local East Midlands Gas Board showroom, and be sure to ask for details of 'cheap-rate' gas.

ODELL BROS.

11-13 HIGH STREET, NEWPORT PAGNELL
Tel. 24

Stock

VALSPAR

DURADIO

WALLCHARM

WALPAMUR

SNOWCEM

(Ask for free colour charts)

Spillers and Carta Carna Dog Food

Dehydrated Dog Meat

Capetins and Spratts Budget and Canary Food

Budget Toys

Lawn Mowers

Garden Tools by leading Makers

Terex Spades and Forks

(Ask for illustrated booklet)

Agents for Carter's and Webbs Garden and Farm Seeds

Large Variety of Household Requisites

Mechanics Tools, etc., etc.

The Week's Events

Saturday, 26th.

Newport Pagnell Town Band March and Deportment. High Street, Lovat Bank, 1.30 p.m.
Children's Fancy Dress.
Band Contest, Lovat Bank.
Newport Pagnell Allotments Holders Association, Open Show.

Sunday, 27th.

Youth Club Adult and Children's Treasure Hunt.
Open Air Service.

Monday, 28th.

Roosters Motor Cycle Gymkhana.
Brooklands Club Choir.

Tuesday, 29th.

Women's Institute Arts and Crafts Exhibition.
Pioneers "Welcome Stranger!"
Newport Pagnell Bowling Club. Urban City Fathers v. Rural City Fathers.
Newport Instruments Open Evening.

Wednesday, 30th.

Pioneers Concert Party "Oh! Lympic Meeting!"
St. John Ambulance Brigade Display.

Thursday, 31st.

Swimming Club "Gala."
Royal Observer Corps Free Trips to Underground Post.

Friday, 1st.

Army Display, Bury Field.
Parachute Descent, by members of the Regimental Parachute Club.

Saturday, 2nd.

Scouts and Guides Model Camp.
Crowning of the Carnival Queen.
Exhibition of Wool and its Products.
Parade of Floats.
Workman's Social Club Fruit and Flower Show.
Film Show by Newport Pagnell Young Farmers
Fleece-winding Competition.
Grand Carnival Dance.

Newport — Old and New

A Display of Photographs and Plans at the Urban District Council Offices, High Street. Open Monday to Friday.

SATURDAY, AUGUST 26th.

NEWPORT PAGNELL ALLOTMENT HOLDERS AND GARDENS ASSOCIATION

FRUIT, FLOWERS, VEGETABLES, HANDICRAFTS, INDUSTRIAL
OPEN SHOW

SATURDAY, AUGUST 26th

at LOVAT BANK

Opened at 2.30 p.m. by Mrs. D. Line

Presentation of Cups and Awards by Mrs. S. J. Morley

Admission 6d. O.A.P's and Children 3d.

Four Challenge Cups, One Challenge Shield and other special awards
to be won

CLASSES FOR CHILDREN FREE

State Visit of "Her Carnival Majesty" (Miss Maxine Masterson) and
Her Royal Attendants (The Misses Shella Harris and Susan Clarke)
at 4 p.m.

Newport Pagnell Allotment Holders and Gardens Association

The Association formed on July 2nd, 1958, yearly subscription 3s. 6d.,
Old Age Pensioners 1s. 0d., is affiliated to the "National Allotments and Gardens
Society Ltd."

By bulk purchase of Seeds, Fertilizers, Garden Sundries, etc., members
receive substantial reduction in prices of these commodities. Some of the aims
of the Association are to promote a general interest in gardening and to further
the interests of gardeners and allotment holders, and to take joint action on
behalf of its members and arrange for instruction in Horticulture, also lectures,
exhibitions, etc., and to co-operate with any local Authority or Committee having
as their objects the interests of gardeners generally.

The Association is open to all with an interest in gardening, not only in the
Urban District of Newport Pagnell but anywhere where there is no Association
or Club of a like nature operating. From a nucleus of 30—40 founder members,
membership now stands at 230.

NEWPORT PAGNELL TOWN BAND FIFTH ANNUAL BAND CONTEST

at

LOVAT BANK

By Kind Permission of Lt. A. J. MARSHALL, R.A.O.C.

Commence 3 p.m.

"SELECTION" CONTEST

"MARCH" CONTEST (on Stand)

"WALTZ" CONTEST

FOR

THIRD and FOURTH SECTION BANDS.

DAILY HERALD GRADING.

Adjudicator—J. THOMPSON, ESQ.

MASSED BANDS AFTER CONTEST

Followed By

PRESENTATION OF TROPHIES AND PRIZES.

Admission .. 2/-
Bandsmen .. 1/-
Children .. 9d.

MARCH AND DEPORTMENT CONTEST

From

NORTH SQUARE, 1.30 p.m.

Judges: Lt. Col. L. PAYNE, M.B.E., T.D.

W.O.I. E. BALDWIN.

W.O.I. F. WEST.

CHILDREN'S FANCY DRESS

Organised by Newport Pagnell W.I.

1.30 p.m. Market Hill, 2 p.m. Lovat Bank

First Class	2—5 years old
Second Class	6—8 years old
Third Class	9—11 years old
Fourth Class	12—15 years old

Decorated Pram

Decorated tricycle or bicycle

ENTRIES BY THIS PROGRAMME

Newport Pagnell Town Band

Mr. Fred Taylor was Newport Pagnell Town Band formed over 80 years. The Band was dissolved around the year 1902. The one of the first Presidents. The Band was dissolved around the year 1902. The Band being called the Excelsior Silver Band. The present title, Newport Pagnell Town Prize Band, being in consequence of the interest shown in the Band by the Town District Council. Dr. Clay and Mr. F. James are the Council Trustees this year. The Band have regularly been in contests at Brighton and the Surrounding District also the Old Crystal Palace and many Trophies have been won also medals for soloists. The Band has done a lot of work for Charities in the past. The old Hospital Fete being a regular engagement in years gone by.

L. BROOKS

Newport Pagnell W.I.

The first W.I. was started in Canada, in 1897, for the mutual help and benefit of the many women leading isolated and laborious lives in country districts. The first W.I. in England was started in 1915. Since then the movement has steadily grown, so that now there are over 8,000 Institutes with a membership increasing every month.

The Newport Pagnell Women's Institute was inaugurated in April, 1959, and there is a membership of 150, also a long "Waiting List." The meetings are at 7.30 p.m. on the second Tuesday in each month, at the Social Club in Silver Street.

Established 1770

R. Haylar & Sons

(A. J. & M. A. Hardy, Ltd.)

NORTH BUCKS SUPPLY STORES

Newport Pagnell Woburn Sands

Family Grocers

Wine and Spirit Merchants

Diabetic Lager

Whitbread's Ales and Stouts

Bass • Worthington • Guinness • Cyder

Tennents • Holsten • Carlsberg and Tuborg Lagers

Frozen Foods

Telephone Newport Pagnell 93

For

Cosmetics

Perfumes

Home Permanent Waves

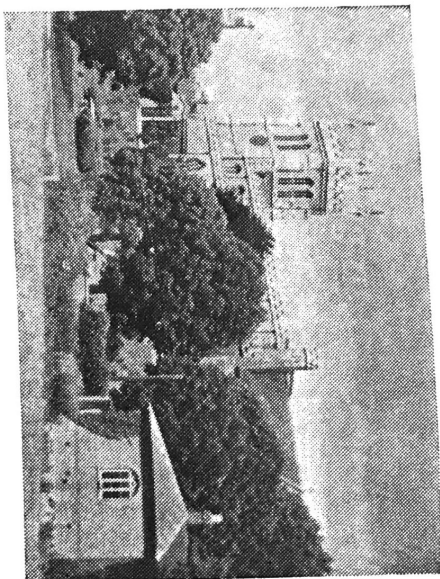
F. T. TAYLOR

(PHARMACY NEWPORT PAGNELL) LIMITED

36 HIGH STREET,
NEWPORT PAGNELL

Phone: NEWPORT PAGNELL 35

SUNDAY, AUGUST 27th.



The Parish Church

The Parish Church, dedicated to SS. Peter and Paul, originally was cruciform in plan with a central tower. About the third quarter of the 14th century the central tower was destroyed, the nave was rebuilt, and the aisles added or rebuilt. In the second half of the 15th century, the chancel was rebuilt, the clerestory added, the north wall of the north aisle almost entirely rebuilt and the whole church re-roofed. The west tower was built between 1542 and 1548. Early in the 17th century the south aisle was almost entirely rebuilt, the embattled parapet and pinnacles of the tower added, and the church was restored. In the second half of the century the chancel was restored, the organ chamber built and the chancel re-roofed, some of the old timbers being re-used, and the chancel re-paved. The choir vestry was added in 1905.

The registers go back to 1558. The chimes were installed in 1887 in commemoration of Queen Victoria's Jubilee. Of the peal of eight bells, five go back to 1749 and the whole peal re-cast and re-hung in 1911. The roof of the nave was completely restored in 1934, the original figures and bosses and much of the original timber being retained. The district church of S. Luke was built in 1910.

J.J.W.

COMBINED OPEN AIR SERVICE

OUSEBANK GARDENS, 7 p.m.

If wet, in Parish Church

The Co-operative Youth Club

The Newport Pagnell Co-operative Youth Club was formed in 1942, and caters for boys and girls between the ages of 14-21 years. Its main aim is to train them to become good citizens. Their activities include public speaking contests, quizzes, discussions and outdoor sports. It does a lot to give members confidence in themselves.

Before their old premises were unfit this club had the largest membership of any Co-operative Youth Club in England. Their club leader, Skip Murren, has been with the club 15 years. At present they are without a clubroom of their own but are hoping that before the year is out something will be done to house them so that the youth of Newport Pagnell can once again enjoy their own company.

Treasure Hunt 3.30 p.m.—4.30 p.m. approx. ADULTS.

Starting at Market Hill.

Treasure Hunt 3.30 p.m.—4.30 p.m. approx. CHILDREN.

Starting at Buryfield Gate.

Your Petrol and Service Station

For Prompt and Courteous Attention

The

North Bucks. Motor Co.

NEWPORT PAGNELL,

Bucks

Phone : Newport Pagnell 57

Prop.: N. E. Hollis

MONDAY, AUGUST 28th.

ROOSTERS MOTOR CYCLE CLUB

GYMKHANA, — CASTLE MEADOW, 7.00 p.m.,

Events will be open to any motor cyclists or people wishing to take part.

Girl volunteers will be required to help with some events.

EVENTS.

1. Parade of Riders and Participants.
2. Sledge Race. (Closed to Club Riders.)
3. Egg and Spoon Race.
4. Obstacle Race. (Female)
5. Obstacle Race. (Male)
6. Pram Race. (Female)
7. Pram Race. (Male)
8. Potato Race.

Hot Dog Barbecue, Tea, Coffee, etc., by Mr. J. Barran,
The Cosy Restaurant

Roosters Motor Cycle Club

The Club was formed in 1947 by a group of local enthusiasts and quickly grew to have a membership of over 100.

The name Roosters originated from the fact that the Club's first H.Q. was the Cock public House in Olney.

After about three years the Club membership slumped to below fifty.

Then in 1958 the Club regained its following and since then it has grown in strength, organising trials and scrambles, etc.

All Grades of Milk

Fresh Cream a Speciality

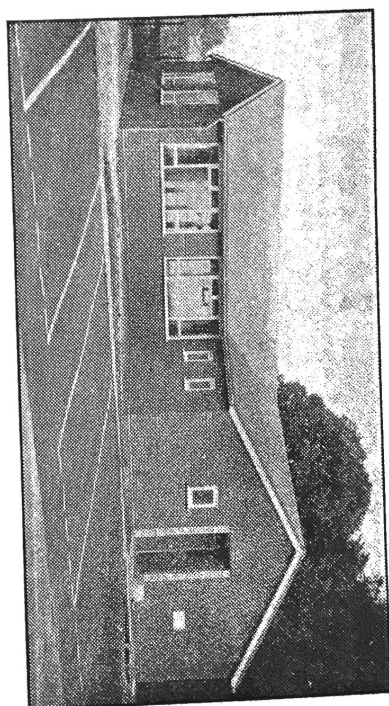
Johnnies' Dairy

ESTABLISHED 1914

HIGH-CLASS DAIRY PRODUCE

106 High St, Newport Pagnell.

'Phone 15



BROOKLANDS OLD PEOPLES CLUB

The first problem tackled by the Newport Pagnell Old Peoples Welfare Committee, formed in 1956 was the provision of a Clubroom.

Battling against odds that at times seemed insurmountable, a new Clubroom has been provided in Ousebank Gardens by the Committee with the help and co-operation of the Newport Pagnell Urban District Council, the willing help of the Town's Traders and the active support of the Townspeople.

Brooklands Club is a modern, airy, well equipped building with a glorious view over the Ousebank garden and surrounding rural countryside.

The Club is open every week-day and the 200 members' activities range through all sorts of entertainments from games, library, outings, music, entertainment from a variety of local individuals or organisations and just "a good gossip over a cup of tea."

An outstanding feature is the Club Choir. All the members of the Choir are Retirement Pensioners and their spirited and tuneful concerts have won them local acclaim.

The fine Clubroom building costing £3,200 0s. 0d. has been financed by a £1,000 grant from the King George VI Memorial Fund, £2,050 from donations and efforts organised by the Welfare Committee and the Club Members, Fetes and other activities, leaving a balance of £150 outstanding.

This has necessitated a great deal of hard work and effort on everyone's part but the reward is surely found on a visit to the Clubroom on any afternoon.

The small group of Brookland Singers were originally formed for their own amusement but by their own efforts and enthusiasm they have earned over £40 for their Building Fund.

Their combined ages total over 900 years and they sing songs old and new with the same gusto.

THE BROOKLANDS CLUB SINGERS

will entertain at 7.15 p.m. in the Clubroom

YOUR MOBIL DEALER

SPECIALISTS IN THE
SERVICING OF ALL MAKES
OF MOTOR CARS—

CANNON SERVICE STATION

Prop : Roger Parker.

OTHER SERVICES EXTEND	ALSO
TO :—	WELDING—
ENGINE TUNING—	BRAZING—
S.U. CARBURETTORS—	PANEL-BEATING—
WHEEL BALANCING	& SPRAYING

Tickford Street,
Newport Pagnell.
Phone.: 564.

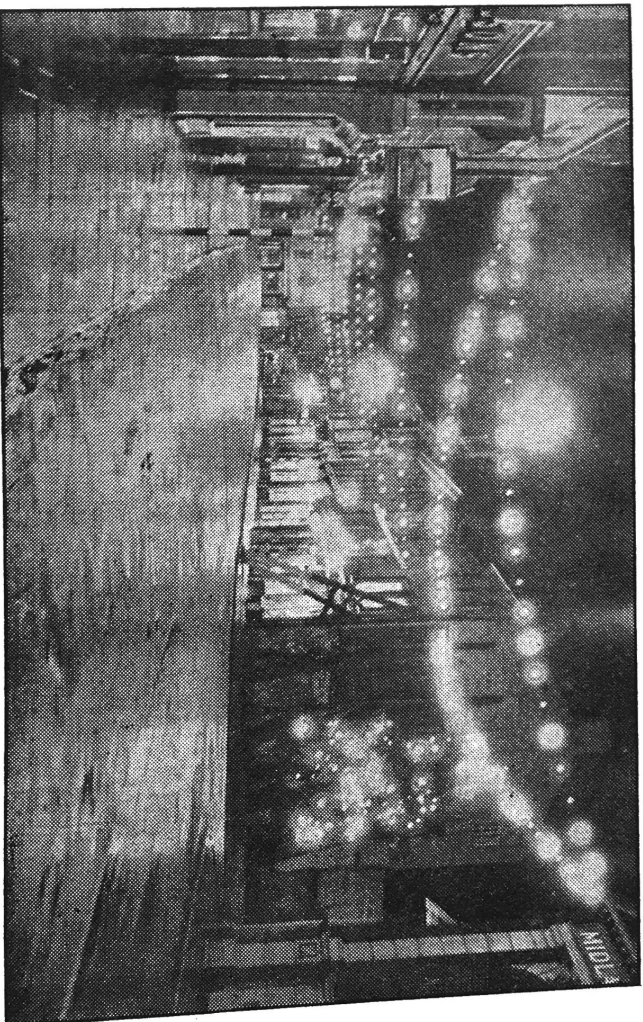
Christmas Street Lighting Scheme

1960 saw an innovation for Newport Pagnell—a Street Lighting Scheme over the Christmas period. Planned by the Town's retailers—and supported financially by other local firms and organisations—the Scheme consisted of strings of coloured lights suspended across the streets in the centre of the Town.

A large crowd gathered for the "switch-on"—performed by Earl Beatty—and the consensus of opinion was that it was a "first-class" effort. In fact, letters in the local press claimed that it was more effective than the schemes of much larger towns.

All the preparatory work was done voluntarily and those responsible again have been "hard at work" for weeks, planning and executing additions to the Scheme for this Christmas.

There is no doubt that the Scheme "brightened" the Town in more ways than one, it was a fine example of what can be achieved by a co-operative effort and it is the organisers' intention to extend and improve the Scheme with each succeeding year.



TUESDAY, AUGUST 29th.

THE PIONEERS

"WELCOME STRANGER"

Newport Pagnell Women's Institute

ARTS AND CRAFTS EXHIBITION

in CHURCH HOUSE from 3 p.m. to 5 p.m.

Admission by Programme

NEWPORT PAGNELL BOWLS MATCH

Urban City Fathers v. Rural City Fathers

At 6.45 p.m. Admission 1/-

NEWPORT INSTRUMENTS OPEN EVENING

6.30 p.m. to 8.30 p.m.

Free Trips from Market Hill

Newport Pagnell Bowling Club

Founded : 1905

Situated : Castle Meadow—Old Abbey Grounds

Pavilion : Brick—Modern—Spacious

Membership : 56

Competitions :

Taylor Cup (Singles) Fenn Cup (Singles, handicap)

English Bowling Association Competitions

Matches : Saturdays and Evenings with clubs within 20 miles radius

Subscription :

£2 2s. 0d.; £1 11s. 6d. (retired members)

The Newport Pagnell Bowling Club was founded in 1905. It is pleasantly situated in the Old Abbey Grounds with a modern spacious pavilion. The membership of 56 enjoy the various matches against neighbouring clubs. Being affiliated to the Bucks County Bowls Association, some of the members enter the English Bowls Association Competitions. In addition, Club Competitions are played during the season, the Taylor Cup and the Fenn Cup.

W.E.A.

The Workers' Educational Association is an independent association wholly concerned with education. Founded in 1903 by trade unionists and co-operators, non-party political and unsectarian, it is student organized and student-controlled. It strives to interest working men and women in their own and their children's education.

A branch was active in Newport Pagnell for many years between the wars and soon after hostilities ceased it was reorganised and has functioned ever since, gaining new members and never running less than two courses in its winter session, besides organizing various educational activities such as visits to Churches, to Stratford-upon-Avon Memorial Theatre and to new schools, etc.

W.E.A. ESSAY

"The Trade Carnival"

To be divided into two age groups:

Up to 11
11 — 15

In each group a First Prize of 15/- and a Second Prize of 5/-.

Each paper to contain child's age (years and months) name and address.

Closing Date, August 26th.

To be handed in to Marshall's, High Street, Newport Pagnell.

WOOLS—All Leading Makes

PATTERNS, BABY WEAR

"WOOLCRAFT"

S. E. FRANCIS



Phone: Newport Pagnell 6



HIGH STREET, NEWPORT PAGNELL,

Bucks.

Carnival Knight Says . . .

*No use tilting at windmills these days.
But it's a feather in your cap if you*

SHOP CO-OPERATIVE

Whirl around the stores and see all that's
newest and best in fashion, food and for the
home. — It's shopping

**PLUS
DIVIDEND**
!

to save you money every time!



Newport Pagnell CO-OPERATIVE Society Limited

A. M. LEATH

S O M E R I E S S U P P L I E S

Stockists of :—

CROWN & ASHLEY WALLPAPERS.

DULUX DURADIO, HADRIAN, NINE ELMS,

PERMOGLAZE & STARLINE PAINTS.

SINK UNITS & BATHROOM SUITES.

FIREPLACES & BOILERS.

TIMBER MOULDINGS & GLASS.

GLAZE TILES & FLOOR TILES.

V.I.P. BOARD, LOCKS, LATCHES
AND GENERAL IRONMONGERY.

SAND, CEMENT, etc.

1, High Street, Newport Pagnell

Telephone 326

WEDNESDAY, AUGUST 30th.

THE PIONEER'S OH! LYMPICS ON THE MARKET HILL

- 7.00 Parade of Athletes.
- 7.15 Arrival of Oh! Lympic Flame.
- 7.25 The Games.
- 8.30 Dousing of the Flame.

ST. JOHN AMBULANCE DISPLAY IN THE CHURCH HOUSE

Come along and see the right and wrong way of treating someone with an injury, how to put on a roller bandage, how to treat burns, severe bleeding and other items staged by all the Divisions for your interest. 8 p.m.—9 p.m.

The St. John Ambulance Brigade Newport Pagnell Division

The History of the order dates back to 600 A.D. when at the behest of Pope Gregory a Hospice was founded at Jerusalem to care for sick and needy pilgrims and was dedicated to St. John the Baptist.

The coming of the Crusaders resulted in the building up of this hospital and the further development of ideals, resulted into a Priory of the Order being formed in England about 1144 at Clerkenwell, which is the Headquarters of the English Order to this day. The Teaching Body, the Association, was then formed, and from that the Uniformed Body, the Brigade, formed in 1887. The Order was granted a Royal Charter in 1888.

In Newport Pagnell the St. John Ambulance and Nursing Divisions was formed in 1925. The Cadet Ambulance and Nursing Divisions being formed in 1945. Thus in the town now are members from 11 years upwards that hold the First Aid Certificate, and fully trained to render First Aid when needed. The organisation being purely of a voluntary nature giving its service free, and upon request undertakes to render First Aid at State, Civic and Public Functions. It is our proud boast that everyone knows the Black and White of St. John, and with it the skill and care given to the injured in times of need.

The Pioneers

The Pioneers were formed 11 years ago, more or less by accident and have been producing shows by the same method ever since.

They have, during this time, been invited by misguided organisers to assist at the opening of the Swimming Pool, the Switching on of the Christmas lights and other Fetes and Functions too respectable to mention.

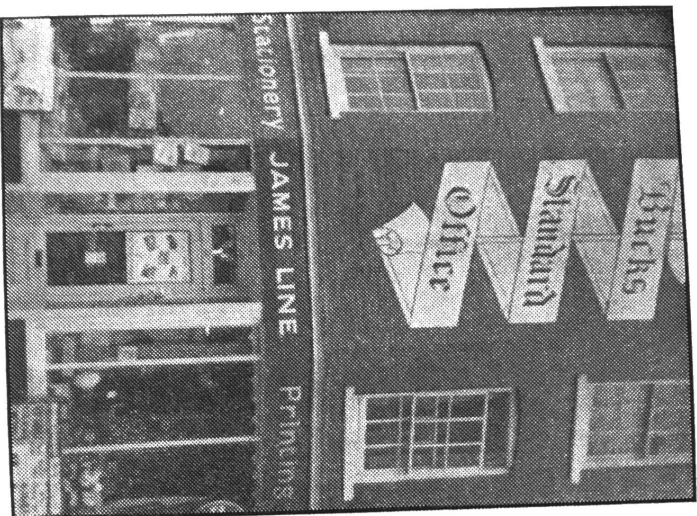
With a record like this how could be prevented, (despite the committees earnest efforts) from interfering with Carnival Week.

The extent of their success and the committee's failure can be judged this (Wednesday) evening.

PRINTING

BY

Skilled Craftsmen



SINCE 1859

SERVICE QUALITY EFFICIENCY

JAMES LINE

10 St. John Street, Newport Pagnell

Telephone 20

Miss Bucks Standard

MISS BUCKS STANDARD Competition was started by the BUCKS STANDARD, Newport Pagnell's own newspaper, in conjunction with the Newport Pagnell Chamber of Trade for Carnival Week.

Entrants pictures are printed in the BUCKS STANDARD (six each week) and then all the pictures are printed with a voting slip.

Voting slips are deposited in a special ballot box at James Line, Shop, 10, St. John's Street, Newport Pagnell.

MISS BUCKS STANDARD, selected by popular vote, will be presented with a Silver Cup by the Bucks Standard and credit voucher slips from the Chamber of Trade. She will also attend various functions as an honoured guest of the Chamber of Trade Carnival Week Committee.

Read THE BUCKS STANDARD to see who is the lucky winner!

For the Utmost Value

W. R. BOWNESS

4 High Street, Newport Pagnell

"DORNA" BRAND

SHEETS TOWELS

PILLOW CASES BLANKETS

"ST. MARGARET"

KNITWEAR NYLONS

UNDERWEAR

LIFE

FIRE

Telephone :

NEWPORT PAGNELL 256.

THE S.T.C. PROPERTY AGENCY LTD.

INSURANCE BROKERS

116 HIGH STREET,

NEWPORT PAGNELL.

ACCIDENT

MOTOR

THURSDAY, AUGUST 31st.

Newport Pagnell Swimming Club

GALA

in the Pool at 7 p.m.

LIFE SAVING DISPLAY BY POLICE and

ST. JOHN AMBULANCE BRIGADE

Admission :

Adults 1/- Children 6d.

CARNIVAL QUEEN TO PRESENT PRIZES

ROYAL OBSERVER CORPS

DISPLAY OF EQUIPMENT AT OUSE BANK ROOM

6.30p.m. to 9p.m.

Admission by this Programme

AND

FREE TRIPS TO UNDERGROUND POST ON CHICHELEY HILL

Newport Pagnell Swimming Club

First formed in 1895 with a membership of 12. In 1898 The Duke of Bedford presented a Challenge Cup for competition among Clubs and this was won five times in succession by Newport Pagnell. To mark this great achievement the Cup was presented to the Club and each member of the team received a gold medal.

In 1902 the Duke of Bedford presented a Perpetual Cup for competition and this was won on several occasions by the Club.

Many international swimmers came to Newport Pagnell in the early 1900's, among them J. A. Jarvis, Miss Clara Jarvis, Professor E. Biezard and J. Nuttall, World Professional Champion, 1903.

The Club lapsed from 1914 to May, 1920, when it was reformed until the early '30's when due to river pollution the local bathing place was closed. It was reformed again when the new swimming pool was being built in May, 1957. The Club now has a membership of 190, among them being Neil McKechnie, S.F.S. the English International.

GIBSONS of NEWPORT PAGNELL

52-54 HIGH STREET

★

LADIES OUTFITTERS
for **GOODS of QUALITY**

YOUR LEADING AGENT FOR :—

ELSWICK—RALEIGH—TRIUMPH

AND B.S.A. CYCLES.

TYRES AND TUBES, ALL SIZES IN STOCK.

EXPERT REPAIRS.

Also

FISHING TACKLE OF MOST FAMOUS MAKES.

TENNIS RACKETS, TENNIS BALLS, ETC.

TOYS IN LARGE VARIETY

JOIN OUR XMAS CLUB NOW!

F. L. FRIDAY
18 HIGH STREET, NEWPORT PAGNELL

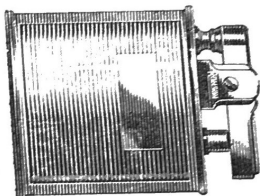
MARSHALL'S

Prop.: R. J. ALBONE

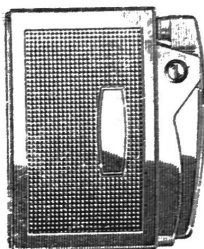
WHOLESALE and RETAIL TOBACCONIST

45 HIGH STREET, NEWPORT PAGNELL

Telephone: 82



RONSON
LIGHTERS



CONFECTIONERY & FANCY GOODS

Telephone 302

Established 1898

JOHN E. CLARE & SONS
NEWPORT PAGNELL

Antique and House Furnishers

RESTORATIONS AND REPAIRS

China and Glass

Fitted Carpets

Curtains

Carpets and Linos

Lino Tiles

Re-Covering

Upholstery

FRIDAY, SEPTEMBER 1st.

DISPLAY BY 1st GREEN JACKETS, 43rd & 52nd.
IN BURY FIELD

TIME	EVENT
6.30 p.m.	Band marches from OUSE BANK CHAMBERS to BURY FIELD.
7.00 p.m.	Band plays on BURY FIELD.
7.20 p.m.	Drill Squad.
7.30 p.m.	Parachute descent by members of the Regimental Parachute Club.
7.45 p.m.	Platoon Attack.
8.10 p.m.	Support Weapons Competition.
8.20 p.m.	Band Sounds Retreat.

WALTONS STORES

THE LEADING FOOD AND WINE SUPPLIERS

21 High Street, Newport Pagnell

FOR QUALITY AND SERVICE IN GROCERIES,

PROVISIONS, WINES, SPIRITS.



Telephone: Newport Pagnell 63



Deliveries to all parts of the district.



Nancy Spain

The Famous *News of the World* Columnist
and Television Personality

Miss Nancy Spain will Crown The Carnival Queen, on September 2nd.
organised by Newport Pagnell British Legion (Womens Section)

Come what may !

Prices up ?

Taxes up ?

Deposit up ?

Rental up ?

Interest up ?

OUR WAY STAYS THE SAME

THRIFTWAY

CASH PRICE

EASY TERMS

25 %

6 Months

DEPOSIT

TO PAY

NO EXTRA FOR CREDIT !

*Buy your radio, T.V. and electrical appliances the
sensible way - THRIFTWAY*

FRITH RADIOCRAFT LTD.

28 HIGH STREET

NEWPORT PAGNELL

Phone 237

CROWNING of the CARNIVAL QUEEN

by Miss Nancy Spain

MARKET HILL, 3.45 p.m.

British Legion (Women's Section)

PARADE of FLOATS

4.30 p.m.

Assemble Renny Lodge 4 p.m.

To be Judged by MISS NANCY SPAIN

GRAND CARNIVAL DANCE

Open Air Dance LOVAT BANK 8 - 11.45 p.m.

Harold Batterson Orchestra.

TICKETS 4/6

"BARRANS BARBEQUE"

LICENSED BAR APPLIED FOR

(Try the Newport Waters)

FOR YOUNG AND OLD

(or if you are in between)

DRESS ? — YES !

If Wet, or Snow on High Ground, Still Come,
Only Cancelled if River Floods

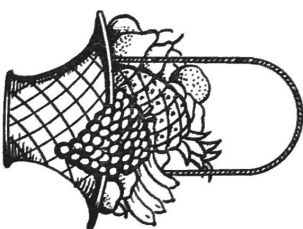
LUCKY SPIN by Newport Pagnell Young Conservatives

Miss Nancy Spain and Carnival Queen Party will be
in Attendance

R. J. ALBONE

HIGH CLASS FRUITERER & GREENGROCER

43 HIGH STREET, NEWPORT PAGNELL



FRESH FRUIT
and Vegetables

SALADS
our Speciality

FOR DELIVERY SERVICE Telephone 82

Newport Pagnell Young Farmers Club

The aims of the Young Farmers' Clubs are to promote good farmers, good countrymen and good citizens. Membership is open to anyone who is interested in the countryside.

The Newport Pagnell Club was formed nearly 20 years ago with a membership of 12, now the membership is over 80 (approximately 50/50) some of whom are sons and daughters of founder members.

Meetings are held each Friday evening during the winter months with a full programme of films, lectures, debates, any questions: visits are made to farms and industries. Members also engage in stock judging and public speaking competitions.

Acknowledgements

The Carnival Committee wish to thank all organisations and firms who have contributed towards Carnival Week and for the individuals, too numerous to mention, who have in any way been connected with this event.

It is hoped that this will be the start of an annual carnival. This year we have had no set theme but have attempted to portray Newport in all its aspects. We hope you will enjoy Carnival Week and will attend as many activities as you possibly can—you will find it worth while.

Editor.

Whilst every care has been taken in compiling this programme and the statements contained herein are believed to be correct, the Printers, Publishers and the Carnival Committee will not hold themselves responsible for any inaccuracies.

Newport Pagnell Branch



Motto—Service, not Self

This year is the 40th Anniversary of the British Legion and the Women's Section.

The Women's Section was formed to co-operate with and further the activities of the Legion: to safeguard the interests of the Widows, dependants, and families of men and women who have served in H.M. Forces. It is the only body of women organised for this purpose. It is a non-sectarian and non-political organisation.

This Branch helps to raise funds for the Legion, especially by their efforts connected with Poppy Day. They organise Whist and Beetle Drives, Jumble Sales, Fetes, Bazaars and Suppers, etc. In fact anything to raise money to support their own schemes for which they are solely responsible: such as the Convalescent Homes, Children's Homes, Welfare and Widow's Allowance Funds.

Above all they are there to keep alive the memory of all who died in the service of their country.

Monthly Branch meetings are held, quarterly Group Meetings and Annual County, Area and National Conferences.

Her Majesty, Queen Elizabeth the Queen Mother is the President and Her Royal Highness The Princess Royal, Patroness.

This Branch was formed in 1922 with 17 members. It now has 89 members. Three of the Founder members still belong.

This year the Branch have donated about £50 to the various Women's Section Schemes.

Finest Selection of Confectionery & Chocolates in the Town

BARNES

(Prop. E. Simpson)

36a High Street, Newport Pagnell.

The Wee Shop with a Happy and Snappy Service.

SPECIAL OFFER

during

Carnival Week

August 26th to September 2nd, 1961

During NEWPORT PAGNELL CARNIVAL WEEK we invite you to use the Coupon below to secure a substantial saving on a new radio, radiogram, T.V., washing machine or refrigerator.

Save approximately £7 on a radiogram, £5 on a T.V., £7 10s. on a washing machine or £5 on a refrigerator.

Definitely for ONE WEEK only. Cut out the Coupon and make use of it NOW.

Save 10% (2/- in the £) with this coupon

VALID only from August 26th to September 2nd, 1961 against any radio, T.V., radiogram or electrical appliance.

Name

Address

.....

FRITH RADIOCRAFT LTD.

28 HIGH STREET

NEWPORT PAGNELL

Phone 237

The High Street – Yesterday and Today

On entering the town from the north, the first thing that takes the eye are the pinnacles of the Parish Church, a closer inspection of this building reveals its various ages of construction, most of the 14th century.

Glancing to the right on entering the town, can be seen the site of the old Mill, first built in Saxon times, finally burned down in 1899 and never rebuilt. On the immediate left is the Public Library, a building of great beauty formerly a private dwelling "Ousebank." The grounds of which are now the public gardens.

At the entrance to Dungen Lane (now Ousebank Street) stands a modern shop, on the site previously occupied by one of the town's private schools for boys, conducted by Mr. William Burn a man of great artistic ability. At the entrance to the Church stands a property now and for many years an Ironmongers shop, noted for its noble doorway entrance.

Next are two provisions stores, both of which stand on sites formerly occupied by two of the town's many inns namely, The White Hart and The Red Bull. The Swan Revived dates back to the 16th century and was a coaching Inn together with its next door neighbour the Saracens Head. The headquarters of Sir Samuel Luke, Parliamentary Governor of the town during the Civil War.

The shops nearer to Cannon Corner were formerly The George Hotel. Opposite stands a period building of great interest, now a furnishing store, next we come to the Cannons, behind which are the remains of one of the Town's early Breweries.

Lower down the High Street we come to a house of Tudor origin, now used as a dry cleaning depot. Opposite is the Congregational Chapel, known formerly as the Independent Meeting Chapel and some of the earlier buildings still remain.

The present Vicarage is an historic building formerly a Girl's private school. Next to this stands all that remains of the Baptist Chapel and opposite is the Methodist Church dating back to early 19th century.

South of these properties was the Town Green, much of which was taken up by the construction of the Canal and the Railway Station and was bordered by many ancient properties, some of which are still standing.

NEWMAN COLE.

For Your

DRAPERY

Visit

W. T. SMITH
41 HIGH STREET,
NEWPORT PAGNELL

W. FLEET LTD.

Established 60 years

Family Butchers

FOR

BEST QUALITY

LOCAL FED BEEF, PORK AND LAMB

★

**PORK SAUSAGES, PORK PIES,
PRESSED BEEF & BRAWN**
our Speciality

★

FAMILIES WAITED UPON DAILY

Free Delivery in Local Villages
twice weekly

★

**61 HIGH STREET,
NEWPORT PAGNELL**

Phone 59

Newport Pagnell Through The Ages

Remains of the Neolithic and Bronze Ages have been found in the Newport area. It is certain that there was a Roman settlement at Caldecote, and Roman coins have been found in the town itself. An Anglo Saxon cemetery found in the field behind Renny-Lodge Hospital, was dated approximately 450-700 a.d. Tykeford is thought to be an earlier settlement than Newport, and they are both mentioned in the Domesday Book as separate places.

The name Newport means "New Town," possibly in distinction to an earlier town on the same site or nearby. Pagnell was added when the Paganell family held the manor in the Twelfth century. Fulk Paganell founded Tykeford Priory in about the year 1100 a.d., this flourished for many years, but was suppressed in 1524 a.d. after which the buildings fell into disrepair, no remains of them can be seen today in situ.

There was in these early times a castle at Newport, it stood on the slight eminence between the Ouse and the Lovat, that is now the Old cemetery.

The town was a place of some strategic importance during the Civil War, the Royalists partially fortified it, but Parliamentary troops under the direction of Major General Skippon, marched on the town, the Royalist troops deserted their posts and left the town undefended, it was then more strongly fortified and held for the Parliamentary side by Sir Samuel Luke, against several Royalist attacks. Oliver, the second son of Oliver Cromwell, died here of smallpox in 1644, and John Bunyan is said to have served here whilst in the army. In 1646, with victory on the side of the Parliamentarians the garrison was ordered to be disbanded and the fortifications destroyed.

The plague, Annus Mirabilis, was rife in the town in 1666 in fact nearly half the population died of it, the remains of some of these unfortunates were recently unearthed during redevelopment work on the St. John Street site, which was, erstwhile, part of the cemetery.

DENNIS MYNARD.

Newport Pagnell Young Conservatives

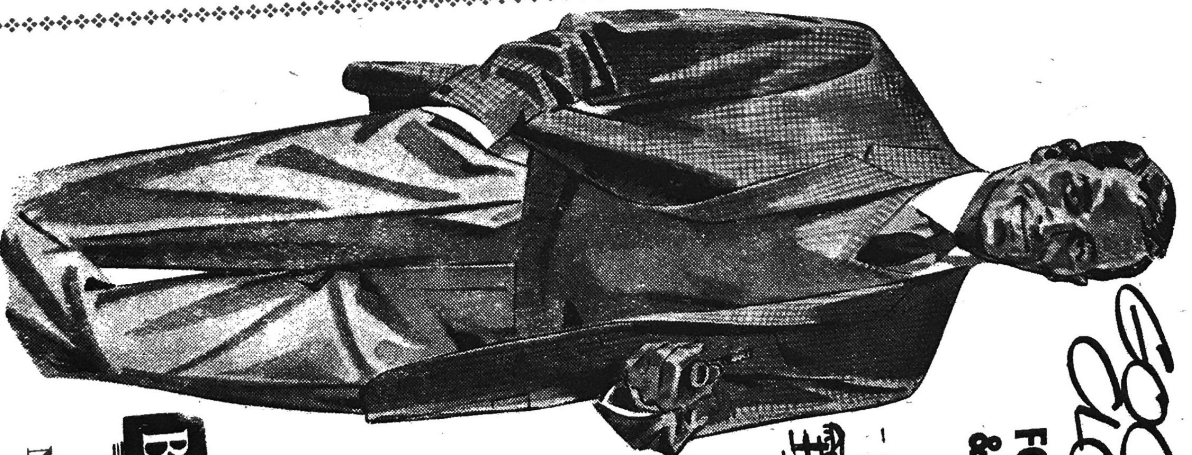
The Newport Pagnell Branch of the Young Conservatives have recently celebrated their first birthday, and I think everyone will agree that it has been an active and successful year.

Our present membership is 84 and we hope it will continue to rise. We meet once a fortnight in the Junior School and shall be pleased to see anyone who would like to join us. Our activities have included dances, outings to theatres and places of interest, and on the more serious side we have debates and talks.

On the political side we have been canvassing in the Elections. We take part in Youth Club activities, and unfortunately were beaten in the semi-final of the "Top of the Form." One of our members has gone to Germany under the Trier Link organisation.

Weekend schools are held which are very educational and helpful to officers, but always prove very entertaining from the social point of view.

N.R.



GOOD CLOTHES

FOR TOWN & COUNTRY



2-PIECE SUITS
SPORTS AND
CASUAL JACKET
SPORTS TROUSERS
HACKING JACKETS
JODHPURS, BREECHES
Ready to Wear or
Made to Measure

RAINCOATS & MACS
DUFFLE COATS

SHIRTS, TIES
KNITWEAR

... and every item a man of
discerning taste requires to
complete his outfit.

BRADLEYS

40-42 High Street,
Newport Pagnell, Bucks.

Telephone 259

REDUCE YOUR PRINTING COSTS

By placing YOUR NEXT ORDER with

THE LOVAT PRESS

14a, TICKFORD STREET, NEWPORT PAGNELL

*The Printers with Modern Machines & Equipment,
that enables you to receive*

SERVICE at the Right Price — Estimates Free

**PHONE
496
for
prompt
SERVICE**

